

The International Seminar on Protected Area Management

Northern Rocky Mountains of the western United States

*July 13-August 1,
2009*



The University of
Montana



**Colorado
State
University**

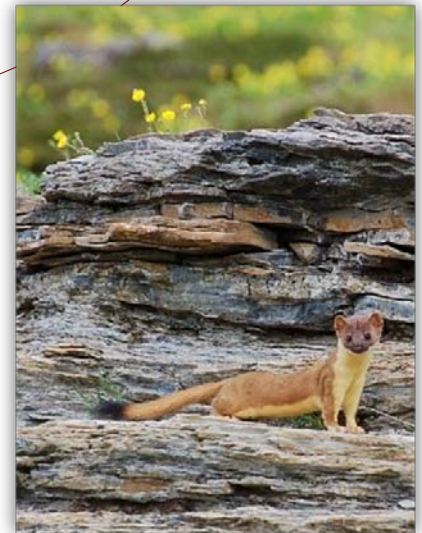


University of Idaho



The Seminar stimulates deliberations and interactive problem-solving for issues related to protected area and natural resource management. Program activities take advantage of the rich experiences and multiple cultural perspectives of the participants, as well as the unique heritage and resources available in the Northern Rocky Mountain region.

To experience the opportunities available in the region, Seminar participants will travel to several types of protected areas. Participants will interact with respected experts in the management of national parks, wildlife refuges, privately held land conservancies, and multiple use forest and grassland reserves.



Participants will visit

- The Bitterroot and Lolo National Forests
- The Flathead Indian Reservation
- The Big Hole Battlefield
- Yellowstone National Park
- Washington, DC

Designed for mid-career planners and managers of nationally significant protected areas worldwide, this integrated state-of-the-art seminar examines strategies to conserve the world's most special places. The program, sponsored by the USDA Forest Service Office of International Programs and The Universities of Montana, Idaho and Colorado State, will evaluate policies and institutional arrangements that sustain both people and natural resources.





Ten years of bringing together stewards of the world's most special places.

Seminar Themes



Integrated Planning for Protected Areas

Participants will examine the strengths and weaknesses of several types of planning models to recognize the potential for resource protection as well as an equitable and sustainable distribution of benefits.

Community Involvement

Participants will explore methods for engaging resident populations in protected area management that address the application of local knowledge, the analysis of stakeholder interests, and the assessment of local land use practices on resource sustainability.

Tourism, Concessions and Visitor Management

Participants will analyze several forms of concession arrangements; they will discuss tourism strategies and the consequences of increased visitation on both the environment and visitor experience; and they will explore the administrative and operational implications of private/public partnerships in protected area management.

Transboundary Management in the Face of Climate Change

Participants will be provided an opportunity to examine transboundary management issues such as climate change, fire, and wildlife management.





Expenses

The cost of the Seminar is \$5500 for each participant, which will include all instruction, lodging, and food throughout the program. Travel that occurs within the United States during the operation of the program will also be covered by the tuition fee. **Air travel expenses to and from the Seminar are the responsibility of participants and/or their sponsors.**

Guidelines

The Seminar is a technical and professional course, placing a high demand on the attention and contributions of participants.

The course is offered in English, so **English speaking proficiency is a requirement for course attendance.** Each participant will offer a brief presentation on management issues in their home country, allowing others to recognize the common challenges facing managers worldwide.

Selection of participants will be based only on professional and technical competency, without regard to gender, race, creed, or nationality. During the course of the program, all participants will be considered students of the University of Montana.

How to Apply

To apply, download the application from:

<http://www.fs.fed.us/global/is/ispam/welcome.htm>

Enrollment in the Seminar is limited, so early application is highly encouraged. Individuals must apply by April 2, 2009. **Funding for participation is not available from the Seminar organizers.**

More information available from:

Libby Khumalo

Seminar Coordinator

Department of Society and Conservation

University of Montana

Missoula, MT 59812-1224

USA

Phone: 406-243-6610

Fax: 406-243-6656

Email: pam@cfc.umt.edu

Instructional Staff

The International Seminar on Protected Area Management is administered by Professors Wayne Freimund, Jim Burchfield, and Steve McCool of the Department of Society and Conservation at The University of Montana. Key public agency personnel from the USDA Forest Service and the National Park Service and will join the program and assist with program operations, as well as leaders in protected area management from non-governmental organizations and private enterprises.

Timing and Location

The Seminar will begin in Missoula, Montana, on the morning of Monday, July 13, 2009. Participants should plan to arrive in Missoula on or before July 12th so they may have an opportunity to rest before beginning the program. During the Seminar, participants will visit three National Forests, the Flathead Indian Reservation, the Big Hole Battlefield and Yellowstone National Park, followed by a trip to Washington, D.C. Participants will remain in the United States for the duration of the Seminar. Departure should be planned from Washington, D.C. on August 2nd.

