



2011

program. Travel that occurs within the United States during the operation of the program will also be covered by the tuition fee. ***Air travel expenses to and from the Seminar are the responsibility of participants and/or their sponsors.***

**GUIDELINES**

The Seminar is a technical and professional course, placing a high demand on the attention and contributions of participants.

The course is offered in English, so English speaking proficiency is a requirement for course attendance. Each participant will offer a brief presentation on management issues in their home country, allowing others to recognize the common challenges facing managers worldwide.

Selection of participants will be based only on professional and technical competency, without regard to gender, race, creed, or nationality. During the course of the program, all participants will be considered students of the University of Montana.

Enrollment in the Seminar is limited, so early application is highly encouraged. Individuals must apply by April 8, 2011. Funding for participation is not available from the Seminar organizers.

**HOW TO APPLY**

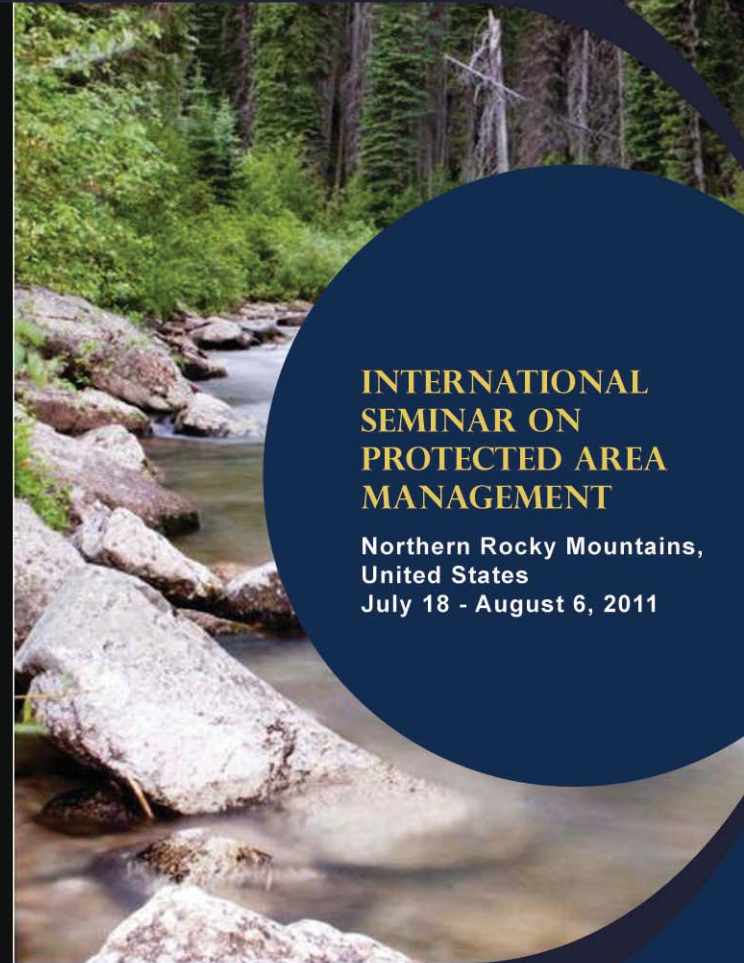
Please download the application from:  
[www.fs.fed.us/global/is/ispam/](http://www.fs.fed.us/global/is/ispam/)

The deadline for submission is **April 8, 2011.**

More information available from:

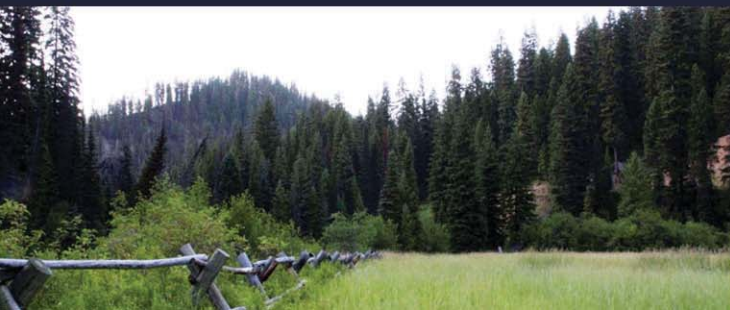
**Laura Becerra**  
Seminar Coordinator  
Department of Society and Conservation  
University of Montana  
Missoula, MT 59812-1224  
USA  
Phone: 406-243-6610  
Fax: 406-243-6656  
Email: [pam@cfc.umt.edu](mailto:pam@cfc.umt.edu)

*For more information on other international seminars sponsored by the US Forest Service and its partners, visit: [www.fs.fed.us/global/is](http://www.fs.fed.us/global/is) .*



**INTERNATIONAL SEMINAR ON PROTECTED AREA MANAGEMENT**

Northern Rocky Mountains,  
United States  
July 18 - August 6, 2011



sponsored by the us forest service international programs, the universities of montana, idaho, and colorado state, and the consortium for international protected area management



University of Idaho





The Seminar stimulates deliberations and interactive problem-solving for issues related to protected area and natural resource management. Program activities take advantage of the rich experiences and multiple cultural perspectives of the participants, as well as the unique heritage and resources available in the Northern Rocky Mountain region.

To experience the opportunities available in the region, Seminar participants will travel to several types of protected areas. Participants will interact with respected experts in the management of national parks, wildlife refuges, privately held land conservancies, and multiple use forest and grassland reserves.

Designed for mid-career planners and managers of nationally significant protected areas world-wide, this integrated state-of-the-art seminar examines strategies to conserve the world's most special places. The program, sponsored by the USDA Forest Service Office of International Programs and The Universities of Montana, Idaho and Colorado State, will evaluate policies and institutional arrangements that sustain both people and natural resources.

**INTEGRATED PLANNING FOR PROTECTED AREAS**

Participants will examine the strengths and weaknesses of several types of planning models to

recognize the potential for resource protection as well as an equitable and sustainable distribution of benefits.

**COMMUNITY INVOLVEMENT**

Participants will explore methods for engaging resident populations in protected area management that address the application of local knowledge, the analysis of stakeholder interests, and the assessment of local land use practices on resource sustainability.

**TOURISM, CONCESSIONS & VISITOR MANAGEMENT**

Participants will analyze several forms of concession arrangements; they will discuss tourism strategies and the consequences of increased visitation on both the environment and visitor experience; and they will explore the administrative and operational implications of private/public partnerships in protected area management.

**TRANSBOUNDARY MANAGEMENT IN THE FACE OF CLIMATE CHANGE**

Participants will be provided an opportunity to examine transboundary management issues such as climate change, fire, and wildlife management.

**INSTRUCTIONAL STAFF**

The International Seminar on Protected Area Management is administered by Professors Wayne Freimund, Jim Burchfield, and Steve McCool of the Department of Society and Conservation at The University of Montana and Profes-

sor William McLaughlin of the Department of Conservation Social Science at the University of Idaho. Key public agency personnel from the US Forest Service and the National Park Service and will join the program and assist with program operations, as well as leaders in protected area management from non-governmental organizations and private enterprises.

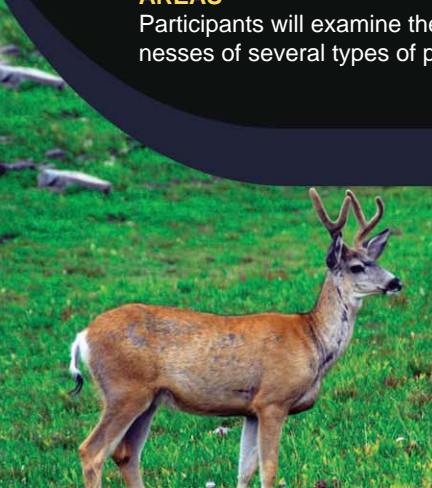
**TIMING AND LOCATION**

The Seminar will begin in Missoula, Montana. It will take place from July 18 - August 6, 2011. Participants should plan to arrive in Missoula on or before July 17<sup>th</sup> so they may have an opportunity to rest before beginning the program. During the Seminar, participants will visit three National Forests, the Flathead Indian Reservation, the Big Hole Battlefield and Yellowstone National Park, followed by a trip to Washington, D.C. Participants will remain in the United States for the duration of the Seminar.

**EXPENSES**

The cost of the Seminar is \$6000 for each participant, which will include all instruction, lodging, and food throughout the

2  
0  
1  
1



**INTERNATIONAL SEMINAR ON PROTECTED AREA MANAGEMENT**  
Northern Rocky Mountains, United States  
July 18 - August 6, 2011

